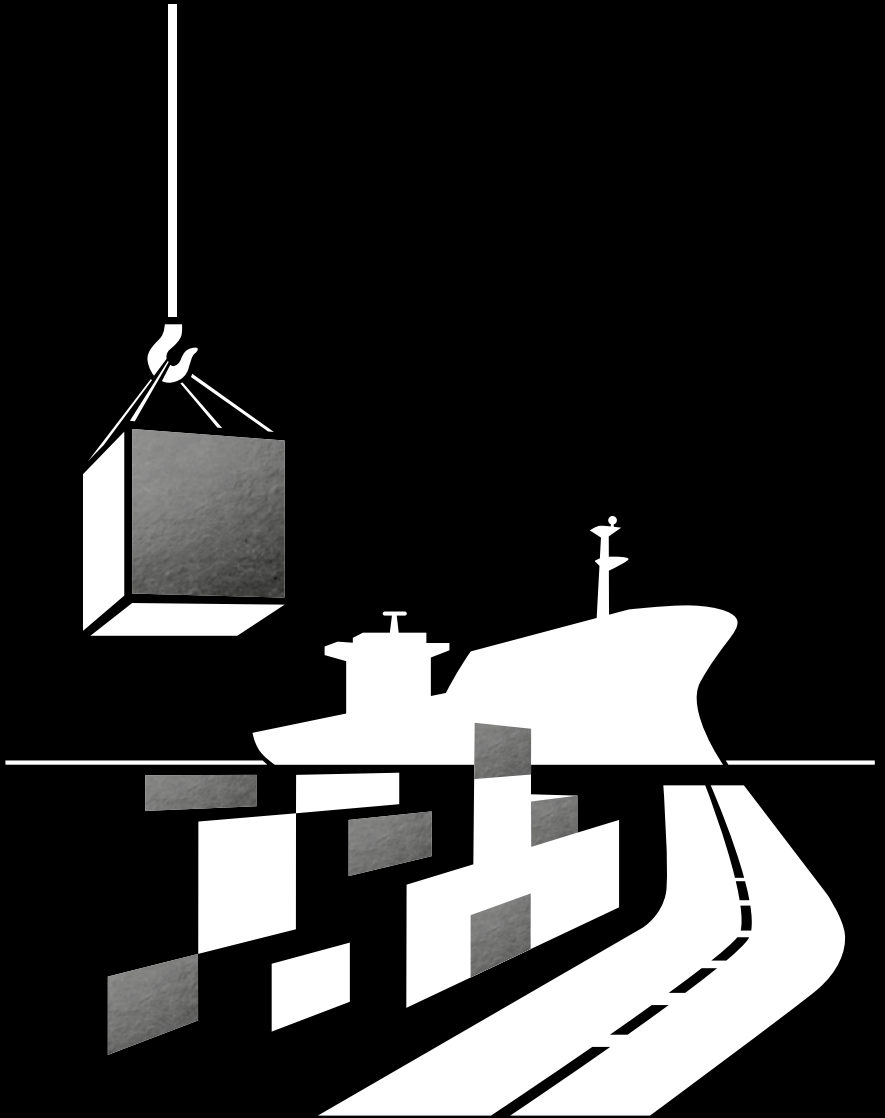


Serving the
Economy.
Serving the
Nation.

ABP | KEEPING
BRITAIN TRADING



The UK's leading ports operator

ABP is the UK's leading ports operator, handling around a quarter of the UK's seaborne trade in goods.

Our 21 ports around Britain include Immingham, the UK's largest port by tonnage, and Southampton, the UK's principal port for automotive trade and number one export port.

Together with our customers, our ports contribute **£7.5 billion** to the UK economy every year and support around **119,000** jobs across the country.

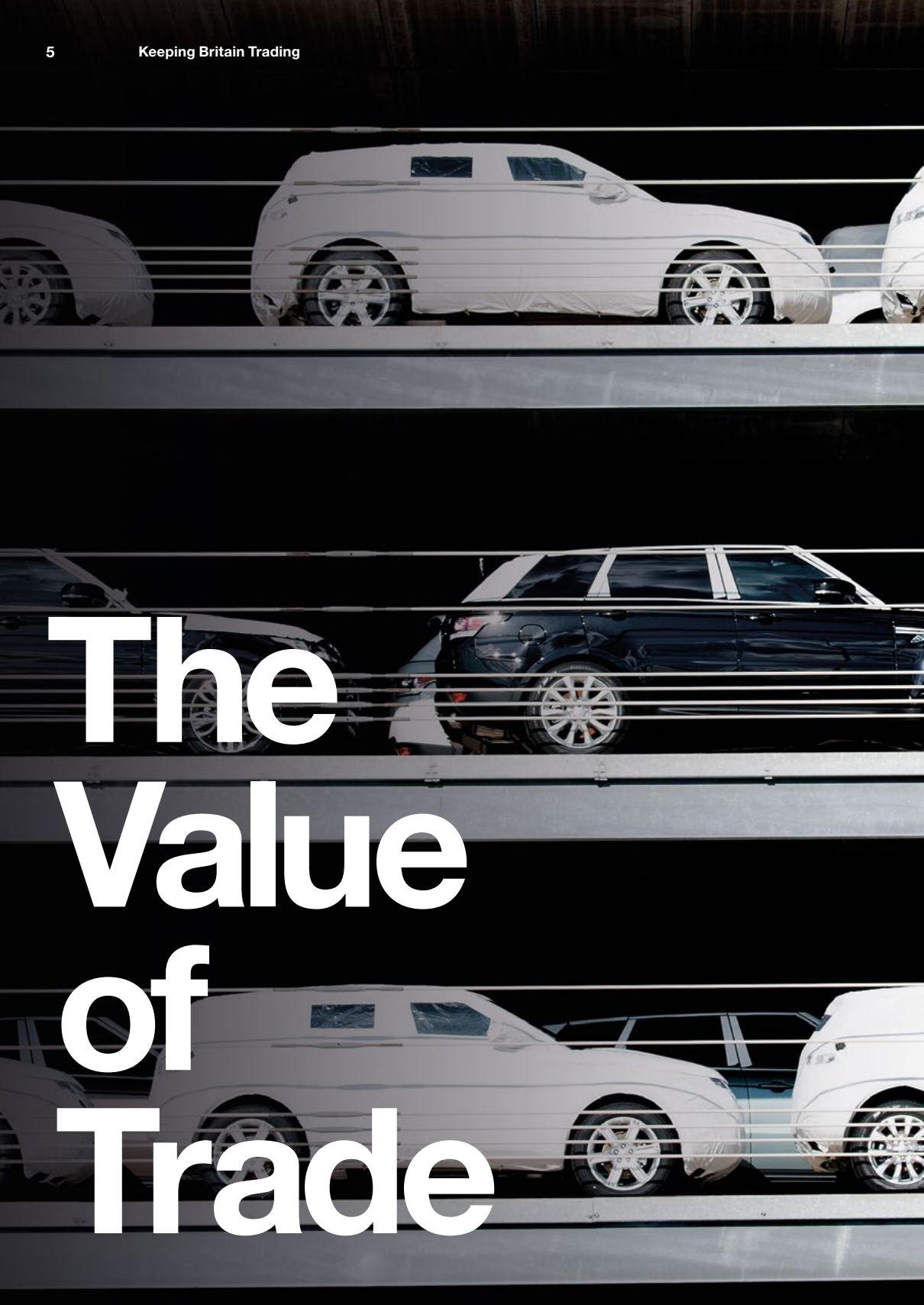
ABP's ports play an important role in supporting businesses up and down the country, facilitating trade and providing access to international markets. These trade flows are crucial to UK manufacturers and industry and help to drive national and regional economic growth.



This report highlights the critical importance of ABP's ports for the British economy and looks at:

- the value of trade ABP handles on behalf of our customers
- the jobs we support in communities around Britain
- the jobs we support through our role in the supply chain of industries such as automotive manufacturing
- the value of our contribution to the economy measured by Gross Value Added ("GVA")
- the development opportunities our ports offer to boost exports, trade and economic growth in the future.





The Value of Trade

£149bn

The value of goods passing through ports for which ABP is the statutory harbour authority.

29%

Share of total value of UK trade in goods handled by ABP.

£40bn

Value of exports handled at the Port of Southampton, making it the UK's number one export port.

£75bn

ABP's Humber ports handle trade worth £75 billion, more than the Mersey, Tees and Tyne combined.

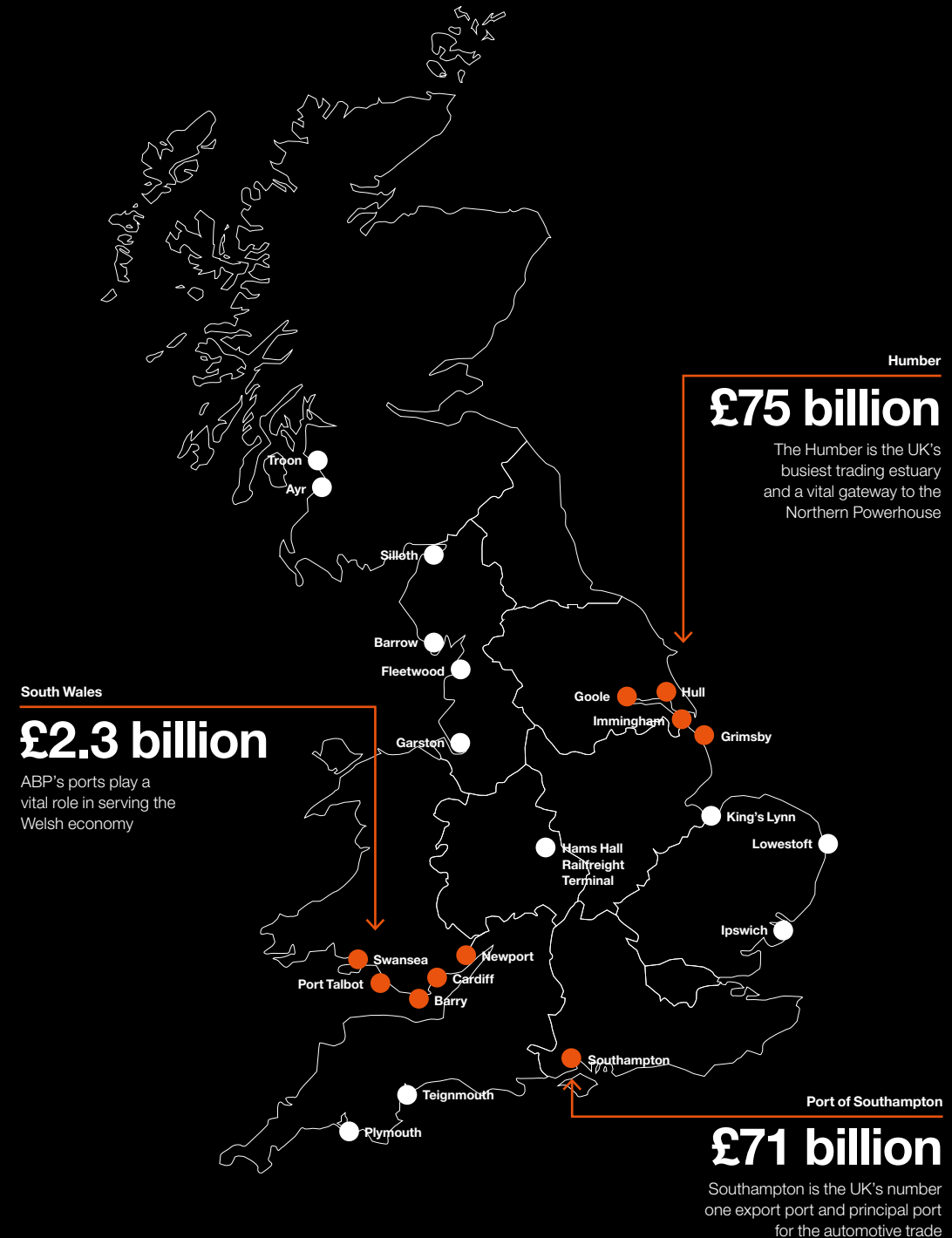
Total Trade

The value of goods passing through a number of ports for which ABP is Statutory Harbour Authority was highlighted in an MDS Transmodal study looking at UK major ports.

For more information visit
www.abports.co.uk

Port	Total
Southampton	£71 billion
Grimsby & Immingham	£62 billion
Hull	£12 billion
Newport	£1 billion
Goole	£805 million
Port Talbot	£764 million
Ipswich	£610 million
Plymouth	£473 million
Cardiff	£422 million
Swansea	£138 million

£149 billion



Exports

Key fact

The Port of Southampton is the UK's number one export port, handling £40bn of exports every year including £36bn of non-EU trade.

Port	Total
Southampton	£40 billion
Grimsby & Immingham	£23 billion
Hull	£4 billion
Newport	£550 million
Goole	£149 million
Cardiff	£123 million
Ipswich	£120 million
Plymouth	£117 million
Swansea	£93 million
Port Talbot	£59 million

ABP Export Total

£68 billion

Imports

Key fact

ABP's Humber Ports are integral to UK energy supply chains, helping to keep 1 in 10 of the nation's lights on.

Port	Total
Grimsby & Immingham	£39 billion
Southampton	£31 billion
Hull	£8 billion
Port Talbot	£705 million
Goole	£656 million
Newport	£509 million
Ipswich	£490 million
Plymouth	£365 million
Cardiff	£299 million
Swansea	£45 million

ABP Import Total

£81 billion



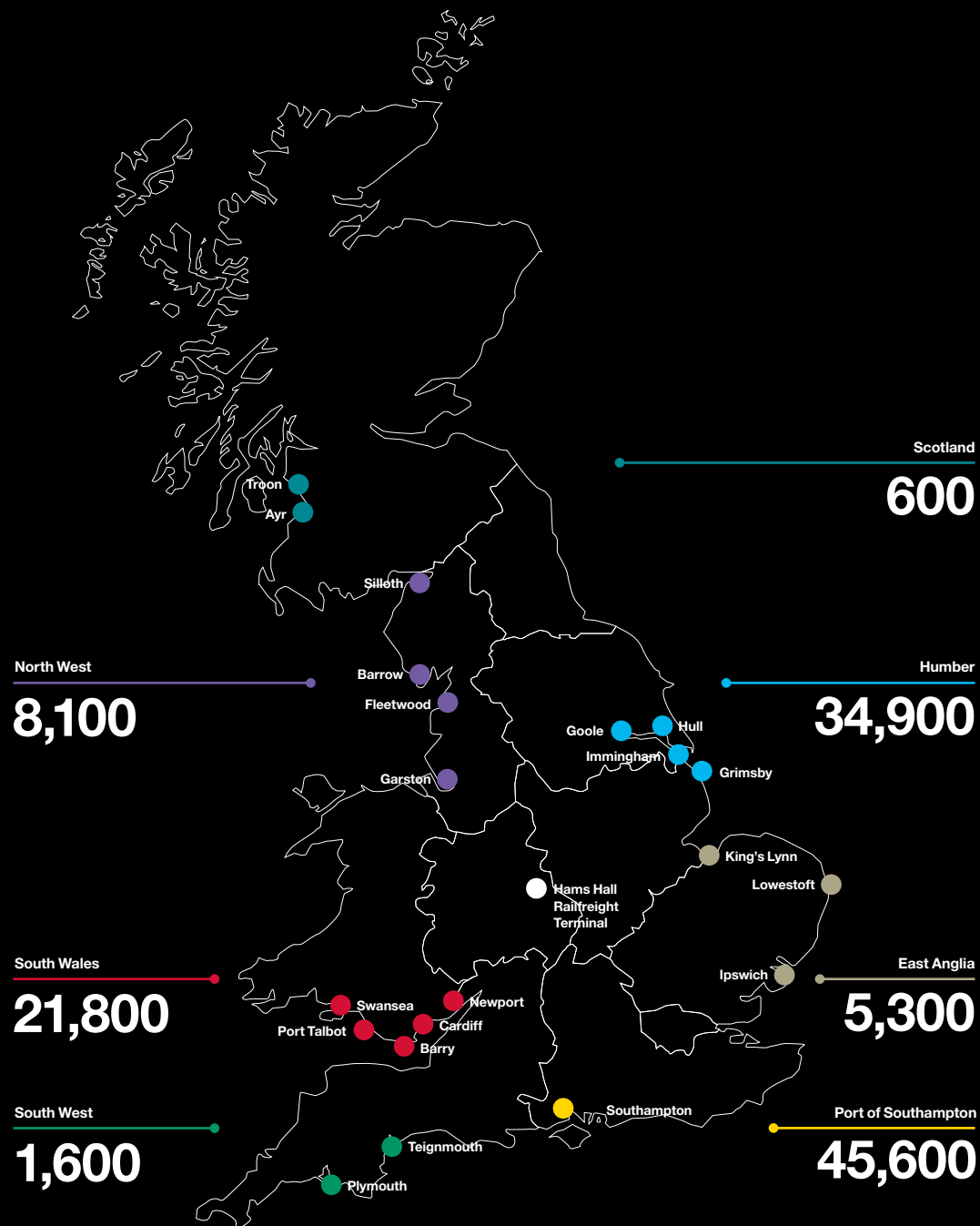
Supporting Jobs and Driving the Economy



119,000

ABP supports 119,000 jobs around the country.

Supporting jobs across Britain



*Nationwide ABP Services support a further 800 jobs across the UK

Supporting jobs in

key industries

ABP's ports are an integral part of often complex supply chains that stretch around the globe.

By enabling the import of components or raw materials and export of finished products, our ports support industry and manufacturing jobs in local economies well beyond their immediate hinterland.

ABP's ports are a vital part of supply chains serving key sectors such as automotive manufacturing, chemicals and pharmaceuticals, and the food and beverages sector.

It is because of this essential role that the Port of Southampton supports 11,700 jobs in the automotive sector in the West Midlands; it's why our ports on the Humber support 5,700 jobs in chemicals, pharmaceuticals, oil and petroleum in West Yorkshire and 12,500 jobs in the food and beverages sector in Greater Lincolnshire.

A study undertaken by Edge Economics focussed on how a selection of ABP ports support jobs in these sectors in a number of Local Enterprise Partnership and new Combined Authority Areas in England.

11,700

The Port of Southampton supports 11,700 jobs in the automotive sector in the West Midlands

5,700


Our ports on the Humber support 5,700 jobs in chemicals, pharmaceuticals, oil and petroleum in West Yorkshire

12,500


Our ports on the Humber also support 12,500 jobs in the food and beverages sector in Greater Lincolnshire



Automotive

-  Automotive manufacturing jobs

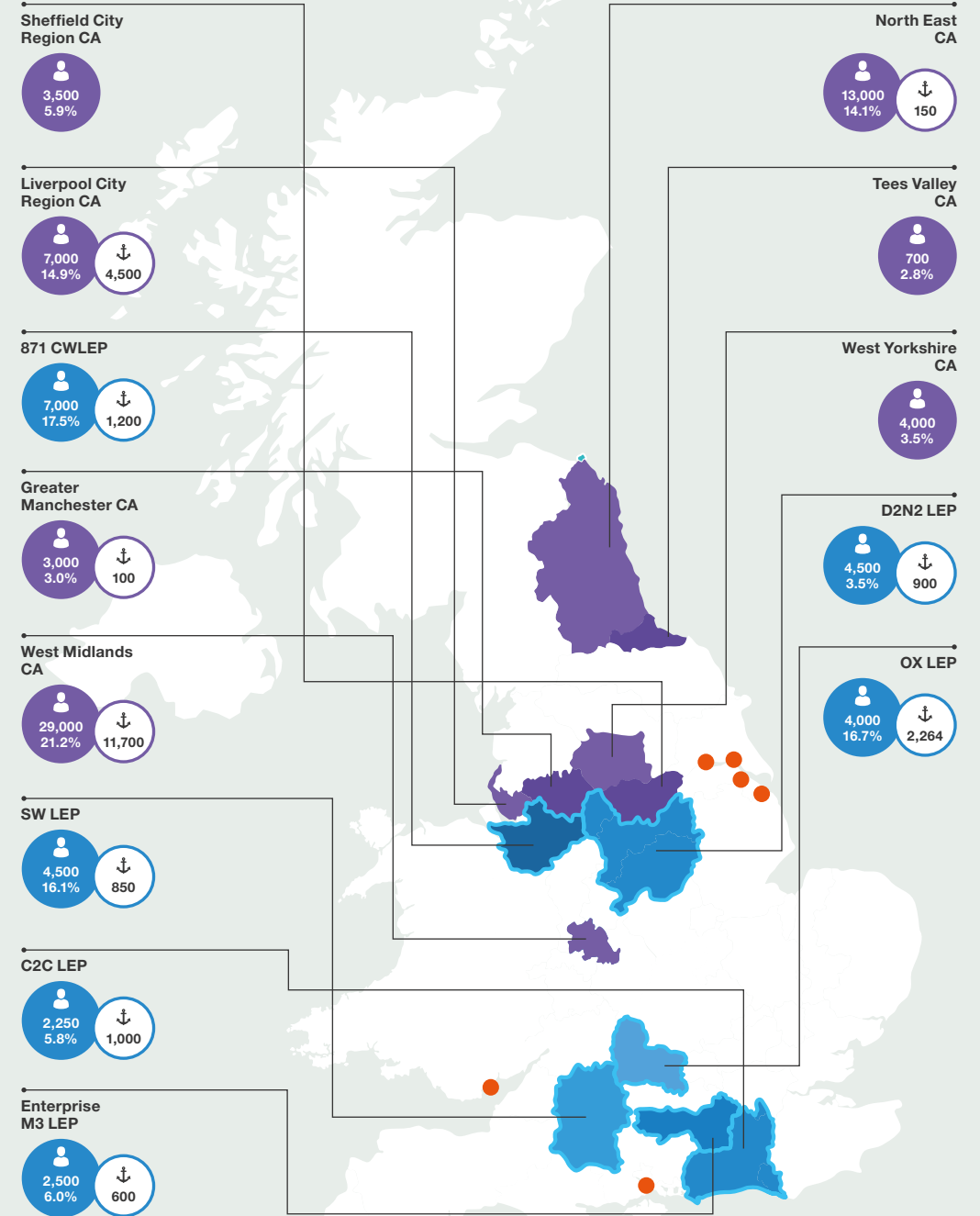
- As a % of the total manufacturing jobs

-  Direct production jobs related to ABP movements

- Combined Authority Areas


- Local Enterprise Partnership areas

- Selected ABP ports



Chemical, Pharma, Oil and Petroleum



 Chemicals, Pharma, Oil and Petroleum manufacturing jobs

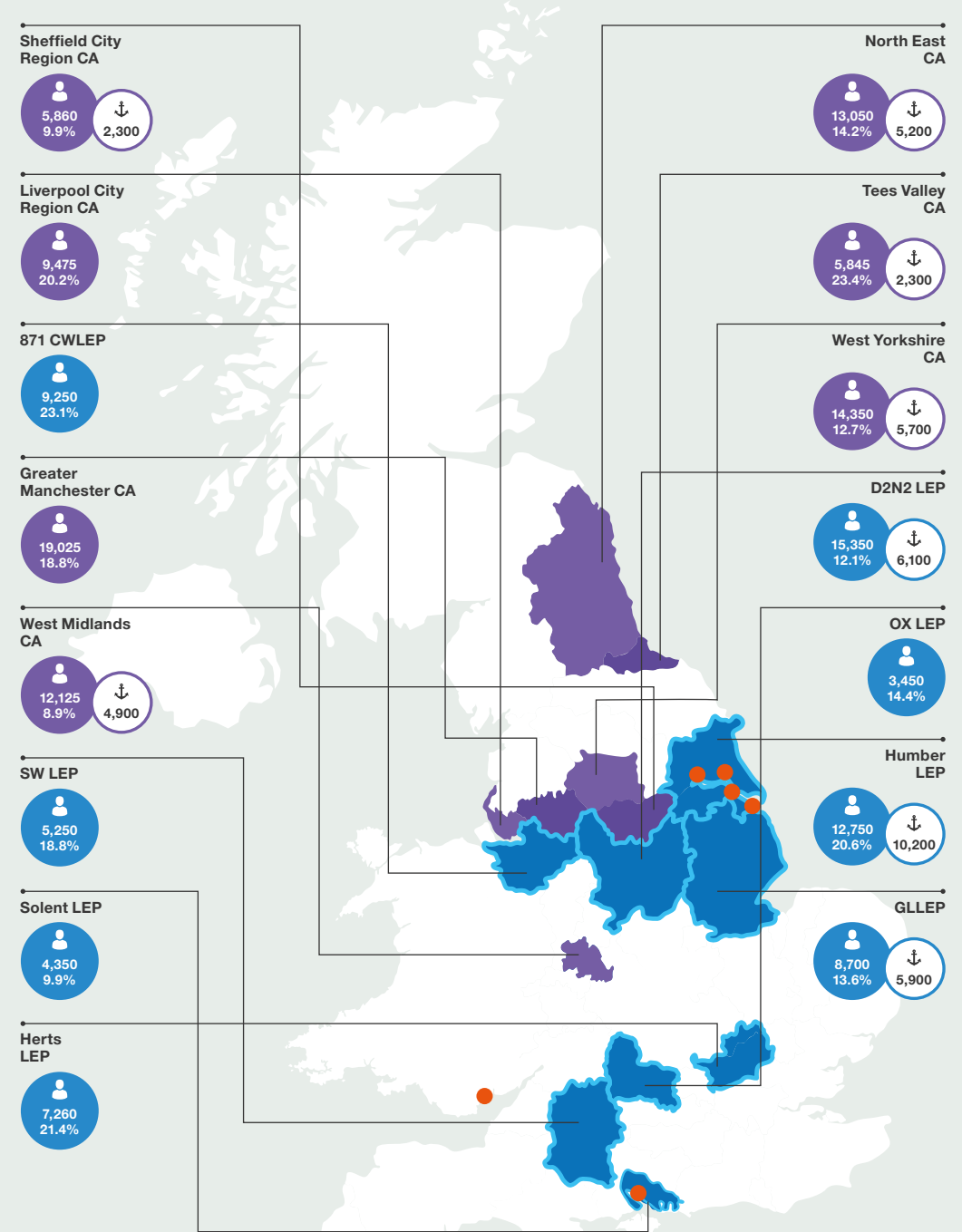
As a % of the total manufacturing jobs

 Jobs supported by intermediate product movements through ABP ports

Combined Authority Areas


Local Enterprise Partnership areas

Selected ABP ports






Food and Beverages


-  **Food and Beverage manufacturing jobs**

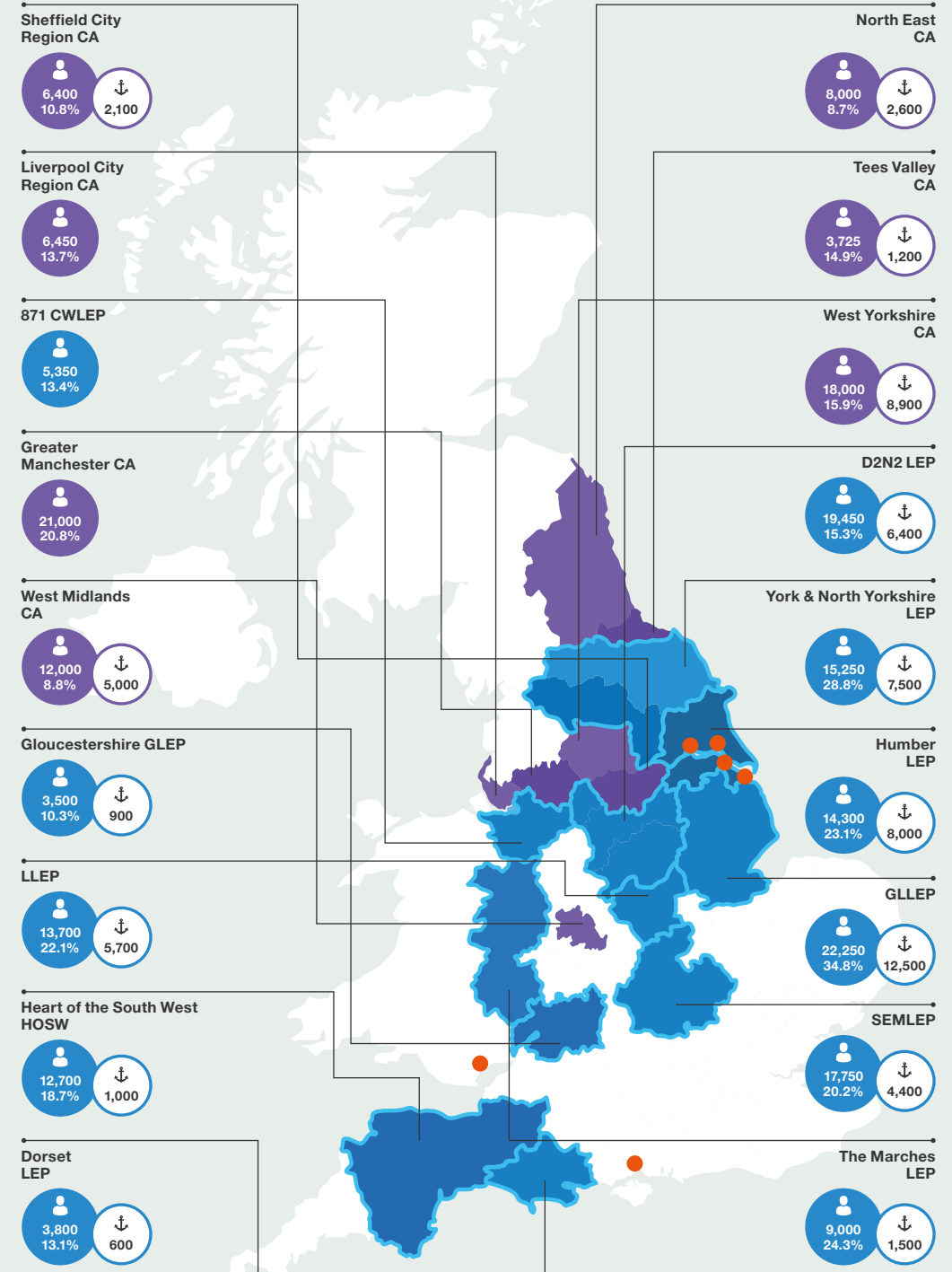
- As a % of the total manufacturing jobs**

-  **Jobs supported by intermediate product movements through ABP ports**

- Combined Authority Areas**

- Local Enterprise Partnership areas**

-  **Selected ABP ports**



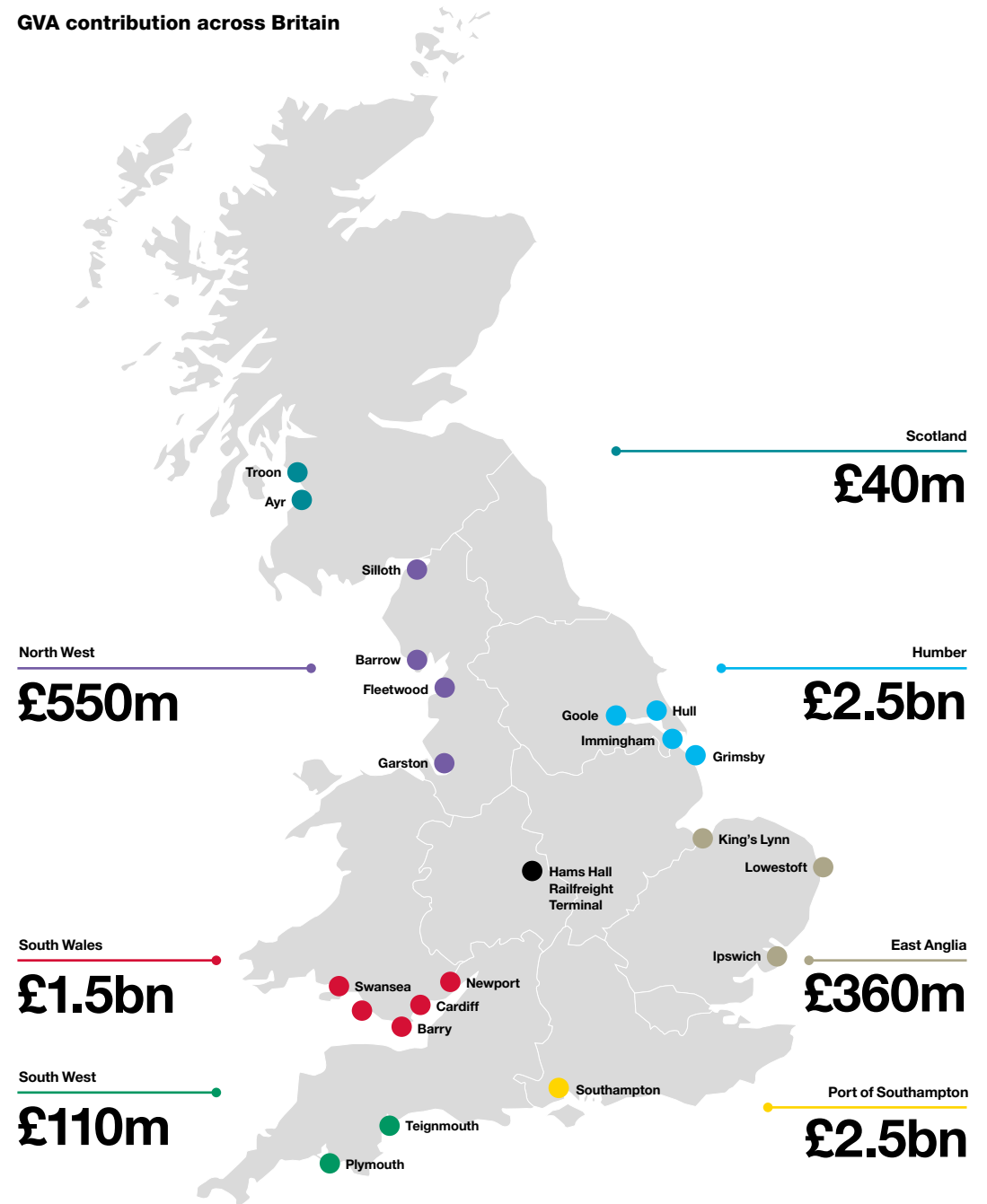
£7.5bn

ABP contributes **£7.5 billion** to the UK economy every year.



*Gross value added (GVA) measures the contribution to an economy of an individual producer, industry, sector or region.

GVA contribution across Britain



A world of opportunity

Our ports offer opportunities for bespoke commercial development across a number of strategic locations served by excellent road and rail connections as well as access to deep water.

ABP's ports are crucial to Britain's industrial and manufacturing supply chains, serving importers and exporters across the country through our network of 21 ports.

These sites provide world-class port facilities and services as well as comprehensive multimodal transport links to major domestic and international markets.

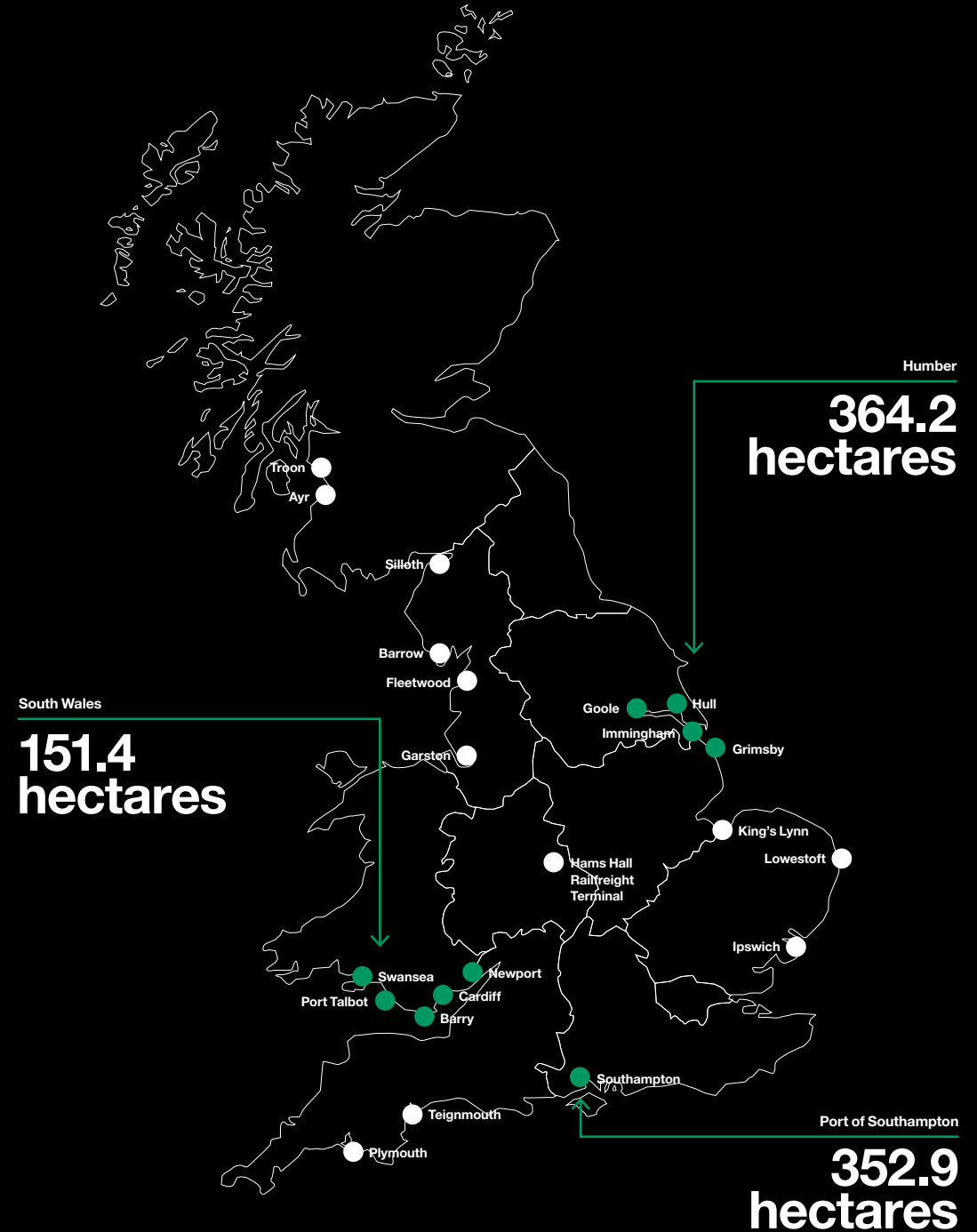
We work with a range of companies across all market sectors and we have a wealth of experience in the provision of industrial, logistics and office space.

Key sites are ready for development in South Wales, the Humber and Southampton.

Total development land available

960 hectares

Development land available



*A further 92 hectares of development land available at other ABP sites

Keeping Britain Trading



